



Presents

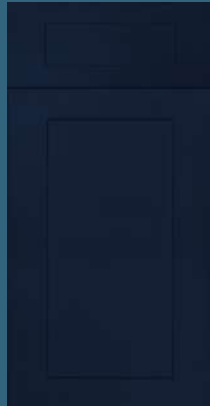
# SIGNATURE BUILT CABINETS



Noble White



Gentry Grey



Society Blue

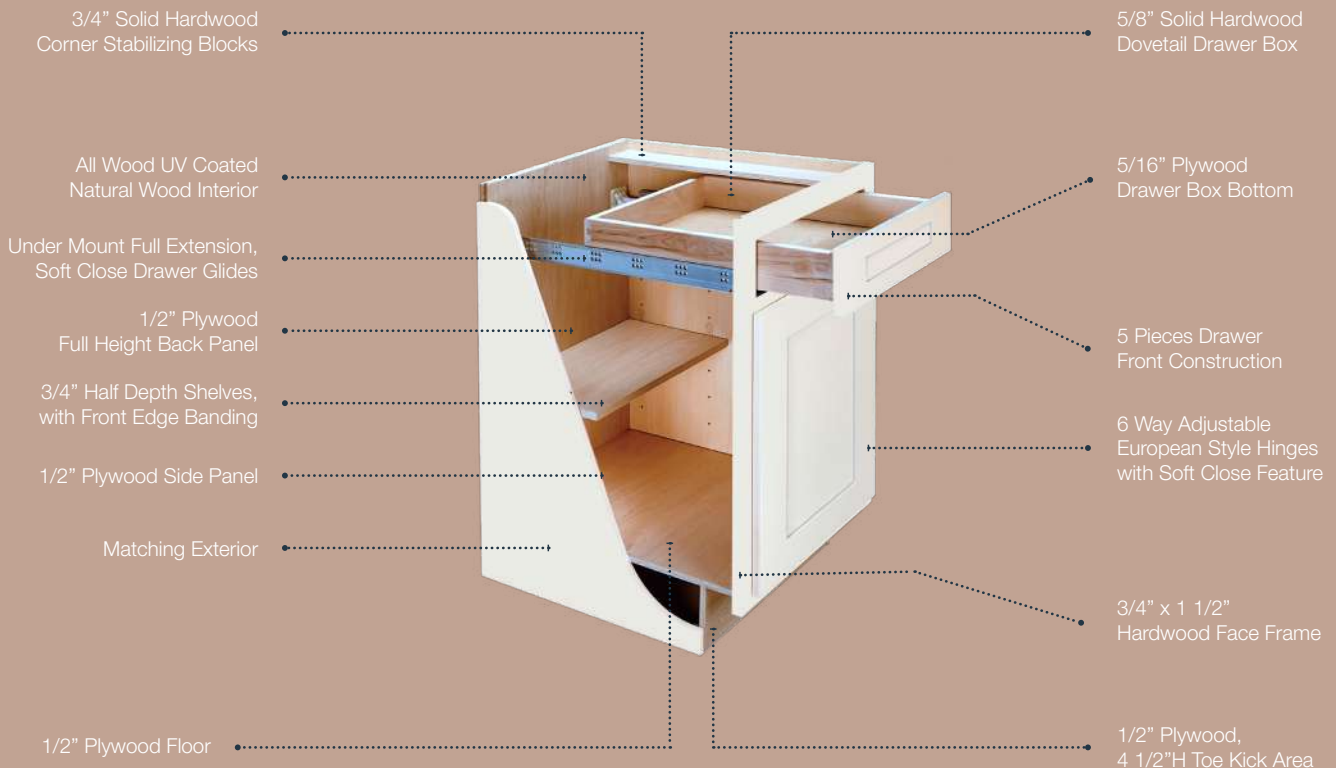


Outlaw Cream



Outlaw Black

**\*Blue & Black available in a limited sku selection**

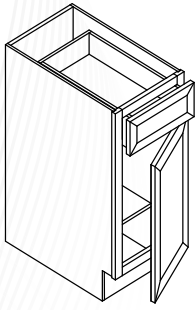


## - Content -

<i>Base Cabinets.....</i>	<i>03</i>
<i>Wall Cabinets.....</i>	<i>07</i>
<i>Pantrys.....</i>	<i>15</i>
<i>Vanity Bases.....</i>	<i>16</i>
<i>Wine Racks.....</i>	<i>17</i>
<i>Decorative Panels &amp; Fillers.....</i>	<i>18</i>
<i>Decorative Panels &amp; Fillers.....</i>	<i>19</i>
<i>Decorative Moldings.....</i>	<i>19</i>

**SIGNATURE  
BUILT CABINETS**

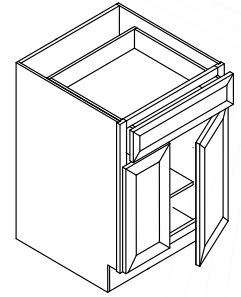
# Product Especification



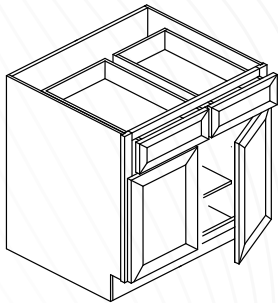
Model	Width	Height	Depth	Adj.Shelf
B12	12	34 1/2	24	1
B15	15	34 1/2	24	1
B18	18	34 1/2	24	1
B21	21	34 1/2	24	1

**Base Cabinet**

Model	Width	Height	Depth	Adj.Shelf
B24	24	34 1/2	24	1
B27	27	34 1/2	24	1
B30	30	34 1/2	24	1



**Base Cabinet**

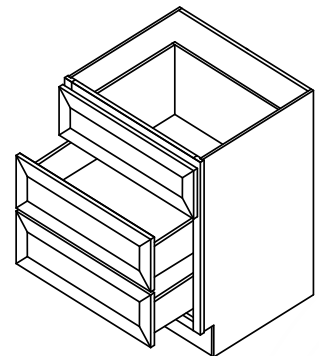


Model	Width	Height	Depth	Adj.Shelf
B33	33	34 1/2	24	1
B36	36	34 1/2	24	1
B39	39	34 1/2	24	1
B42	42	34 1/2	24	1

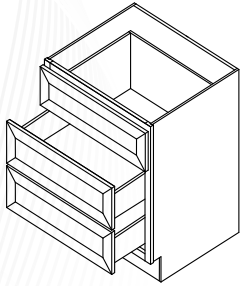
**Base Cabinet**

Model	Width	Height	Depth	Adj.Shelf
3DB12	12	34 1/2	24	
3DB15	15	34 1/2	24	
3DB18	18	34 1/2	24	
3DB21	21	34 1/2	24	
3DB24	24	34 1/2	24	
3DB27	27	34 1/2	24	
3DB30	30	34 1/2	24	

**Drawer  
Base Cabinet**



# Product Especification

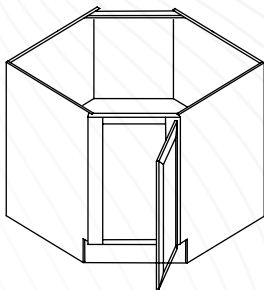
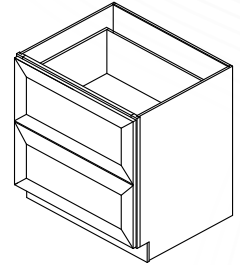


Model	Width	Height	Depth	Adj.Shelf
3DB33	33	34 1/2	24	
3DB36	36	34 1/2	24	

**Drawer Base Cabinet**

Model	Width	Height	Depth	Adj.Shelf
2DB30	30	34 1/2	24	
2DB36	36	34 1/2	24	

**Drawer Base Cabinet**

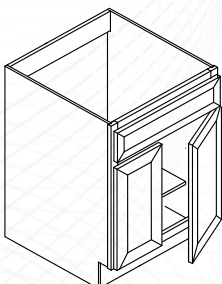
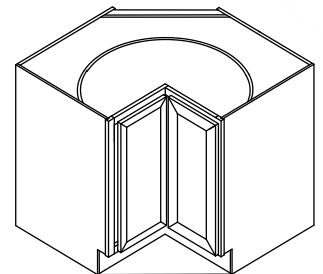


Model	Width	Height	Depth
CSB36	36	34 1/2	24

**Corner Sink Base**

Model	Width	Height	Depth	Adj.Shelf
BER33	12	34 1/2	24	1
BER36	15	34 1/2	24	1

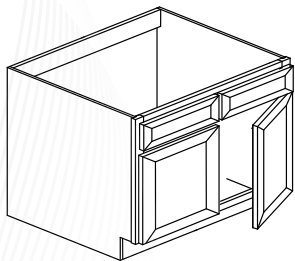
**Easy Reach Cabinet w Wood tray**



Model	Width	Height	Depth
SB30	30	34 1/2	24

**Sink Base Cabinet**

# Product Especification

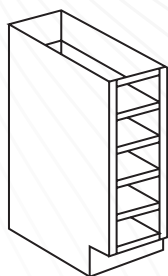
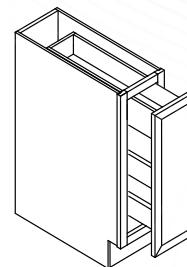


Model	Width	Height	Depth	Adj.Shelf
SBB33	33	34 1/2	24	
SBB36	36	34 1/2	24	

**Sink Base Cabinet**

Model	Width	Height	Depth	Adj.Shelf
SPB6	6	34 1/2	24	
SPB9	9	34 1/2	24	

**Spice Rack**



Model	Width	Height	Depth
BWRC6	6	34 1/2	24

*Avaliable in Society Blue\**

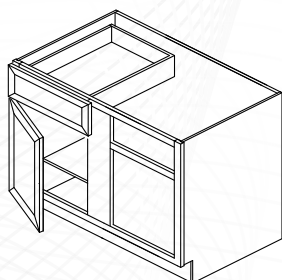
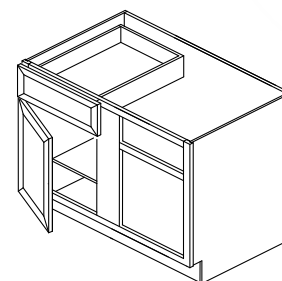
**Base Wine Rack**

Model	Width	Height	Depth	Adj.Shelf
BBC36	27 9" Drawer	34 1/2	24 9" Door	1

**Install Range**

36"-39"

**Base Blink Corner**



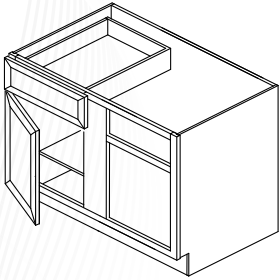
Model	Width	Height	Depth	Adj.Shelf
BBC39/42	36 12" Drawer	34 1/2	24 12" Door	1

**Install Range**

39"- 42"

**Base Blink Corner**

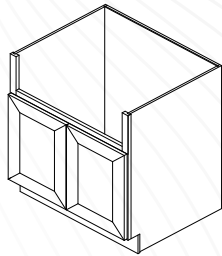
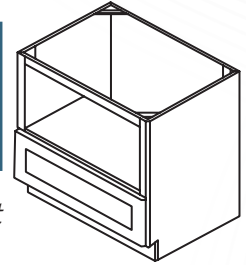
# Product Especification



Model	Width	Height	Depth	Adj.Shelf
BBC42/45	42 15" Drawer	34 1/2	24 15" Door	1
<b>Install Range</b>		<b>Base Blink Corner</b>		
42" - 45"				

Model	Width	Height	Depth	Adj.Shelf
MB30	30	34 1/2	24	
MB33	33	34 1/2	24	

**Microwave Base Cabinet**

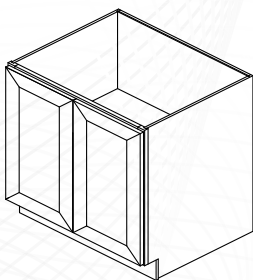
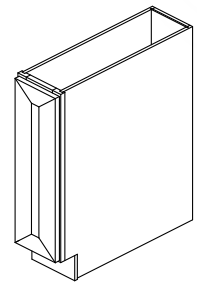


Model	Width	Height	Depth
FSB36	36	34 1/2	24

**Farm Sink Cabinet**

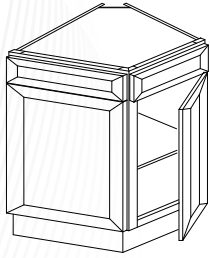
Model	Width	Height	Depth	Adj.Shelf
BT09	9	34 1/2	24	1

**Base Cabinet  
Full Height Door**



Model	Width	Height	Depth	Adj.Shelf
B24FHD	24	34 1/2	24	1
<b>*Coming Soon*</b>		<b>Base Cabinet Full Height Door</b>		

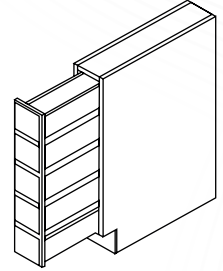
# Product Especification



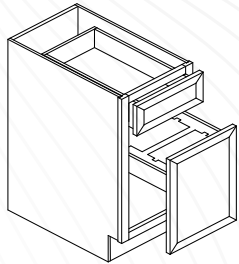
Model	Width	Height	Depth	Adj.Shelf
BEC24	24	34 1/2	24	1

**Base End Corner**

Model	Width	Height	Depth	Adj.Shelf
BSDC6 <i>Available in Society Blue*</i>	6	34 1/2	24	

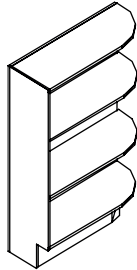


**Base Spice Drawer**



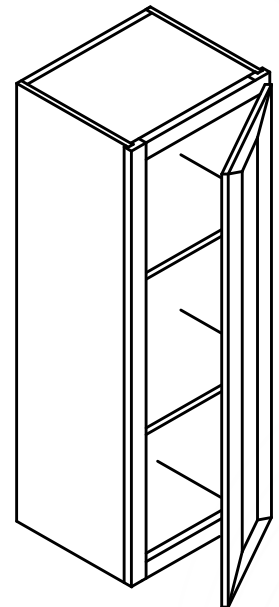
**Base Waste Basket**

Model	BWB18
Width	18
Height	34 1/2
Depth	24



Model	Width	Height	Depth
BES12 <i>Available in Society Blue*</i>	12	34 1/2	24

**Base End Shelf**



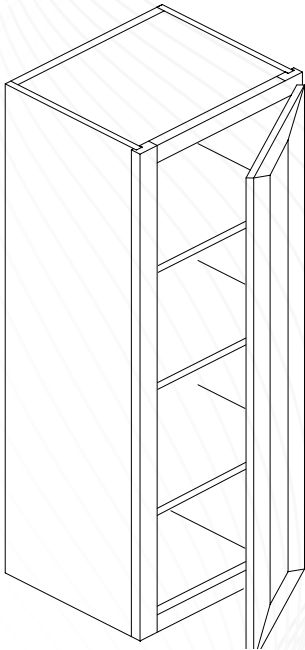
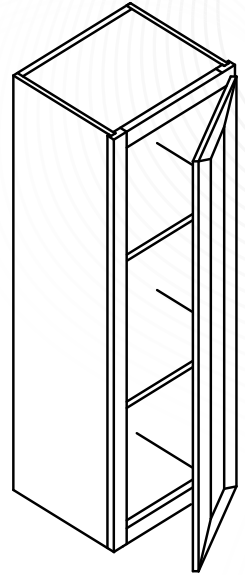
**Wall Cabinet**

Model	Width	Height	Depth	Adj.Shelf
W0930	9	30	12	2
W0936	9	36	12	2
W0942	9	42	12	3
W1230	12	30	12	2
W1236	12	36	12	2
W1242	12	42	12	3

# Product Especification

Model	Width	Height	Depth	Adj.Shelf
W1530	15	30	12	2
W1536	15	36	12	2
W1542	15	42	12	3
W1830	18	30	12	2
W1836	18	36	12	2
W1842	18	42	12	3

Wall Cabinet

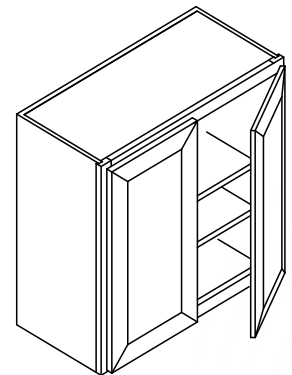


Model	Width	Height	Depth	Adj.Shelf
W1530	9	30	12	2
W1536	9	36	12	2
W1542	9	42	12	3

Wall Cabinet

Model	Width	Height	Depth	Adj.Shelf
W2430	24	30	12	2
W2436	24	36	12	2
W2442	24	42	12	3
W2730	27	30	12	2
W2736	27	36	12	2
W2742	27	42	12	3

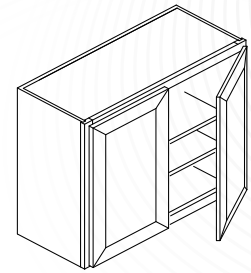
Wall Cabinet



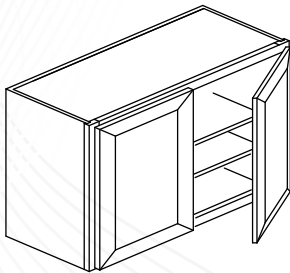


# Product Especification

Model	Width	Height	Depth	Adj.Shelf
W3030	30	30	12	2
W3036	30	36	12	2
W3042	30	42	12	3
W3330	33	30	12	2
W3336	33	36	12	2
W3342	33	42	12	3



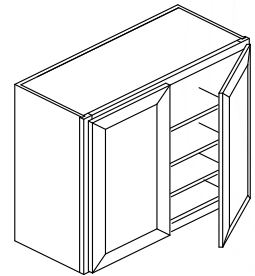
Wall Cabinet



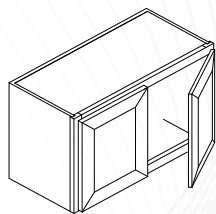
Wall Cabinet

Model	Width	Height	Depth	Adj.Shelf
W3630	36	30	12	2
W3636	36	36	12	2
W3642	36	42	12	3
W3930	39	30	12	2
W3936	39	36	12	2
W3942	39	42	12	3

Model	Width	Height	Depth	Adj.Shelf
W4230	42	30	12	2
W4236	42	36	12	2
W4242	42	42	12	3



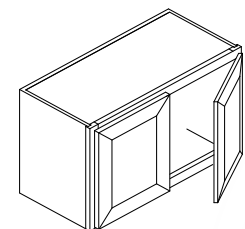
Wall Cabinet



Wall Cabinet

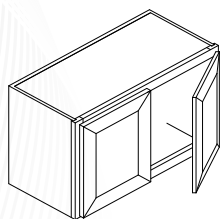
Model	Width	Height	Depth	Adj.Shelf
W2412	24	12	12	No
W2415	24	15	12	No
W2418	24	18	12	No
W2424	24	24	12	1

Model	Width	Height	Depth	Adj.Shelf
W3012	30	12	12	No
W3015	30	15	12	No
W3018	30	18	12	No
W3021	30	21	12	No
W3024	33	24	12	1



Wall Cabinet

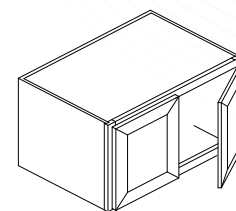
# Product Especification



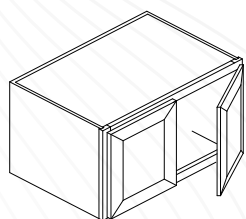
**Wall Cabinet**

Model	Width	Height	Depth	Adj.Shelf
W3312	33	12	12	No
W3315	33	15	12	No
W3318	33	18	12	No
W3324	33	24	12	1

Model	Width	Height	Depth	Adj.Shelf
W3612	36	12	12	No
W3615	36	15	12	No
W3618	36	18	12	No
W3624	36	24	12	1



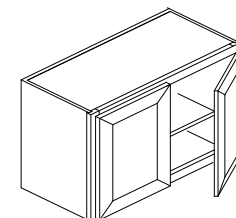
**Wall Cabinet**



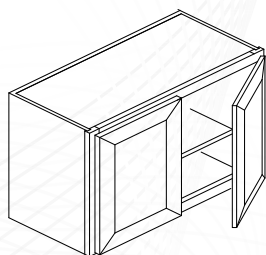
**Wall Cabinet**

Model	Width	Height	Depth	Adj.Shelf
W301224	30	12	24	No
W301524	30	15	24	No
W301824	30	18	24	No
W302424	30	24	24	1

Model	Width	Height	Depth	Adj.Shelf
W331224	33	12	24	No
W331524	33	15	24	No
W331824	33	18	24	No
W332424	33	24	24	1



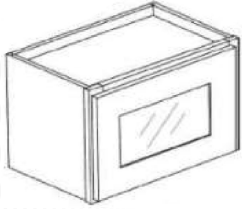
**Wall Cabinet**



**Wall Cabinet**

Model	Width	Height	Depth	Adj.Shelf
W361224	36	12	24	No
W361524	36	15	24	No
W361824	36	18	24	No
W362424	36	24	24	1

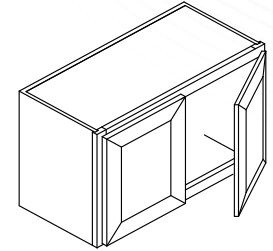
# Product Especification



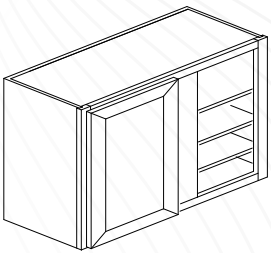
Wall Cabinet - Glass Door

Model	Width	Height	Depth	Adj.Shelf
W1212GD	12	12	12	No
W1512GD	15	12	12	No
W1812GD	18	12	12	No
W2112GD	21	12	12	No

Model	Width	Height	Depth	Adj.Shelf
W2412GD	24	12	12	No
W2712GD	27	12	12	No
W3012GD	30	12	12	No
W3312GD	33	12	12	No
W3612GD	36	12	12	No



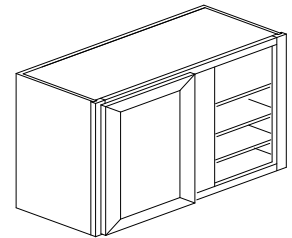
Wall Cabinet - Glass Door



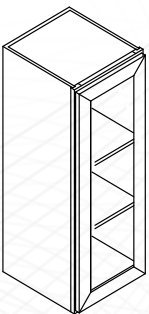
Wall Blind Cabinet

Model	Width	Height	Depth	Adj.Shelf
WBC2730	27	30	12	2
WBC2736	27	36	12	2
WBC2742	27	42	12	2
WBC3030	30	30	12	2
WBC3036	30	36	12	2
WBC3042	30	42	12	2

Model	Width	Height	Depth	Adj.Shelf
WBC3630	36	30	12	2
WBC3642	36	42	12	3



Wall Blind Cabinet

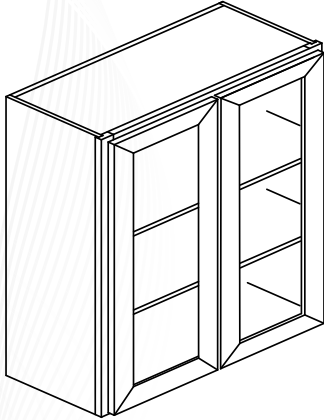


Wall Cabinet - Glass Door

Model	Width	Height	Depth	Adj.Glass Shelf
W1530GD	15	30	12	2
W1536GD	15	36	12	2
W1542GD	15	42	12	3
W1830GD	18	30	12	2
W1836GD	18	36	12	2
W1842GD	18	42	12	3

\*Glass shelf coming soon\*

# Product Especification



Model	Width	Height	Depth	Adj.Glass Shelf
W2430GD	24	30	12	2
W2436GD	24	36	12	2
W2442GD	24	42	12	3
W3030GD	30	30	12	2
W3036GD	30	36	12	2
W3042GD	30	42	12	3

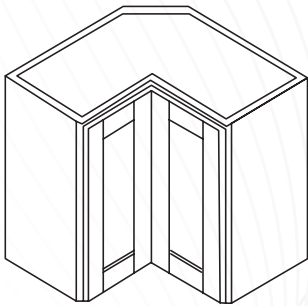
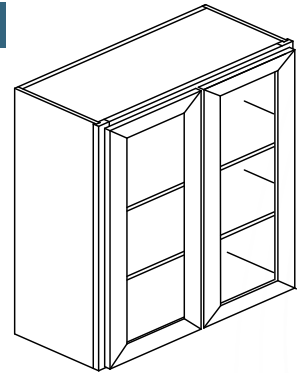
*\*Glass shelf coming soon\**

**Wall Cabinet - Glass Door**

Model	Width	Height	Depth	Adj.Glass Shelf
W3630GD	36	30	12	2
W3636GD	36	36	12	2
W3642GD	36	42	12	3

*\*Glass shelf coming soon\**

**Wall Cabinet - Glass Door**

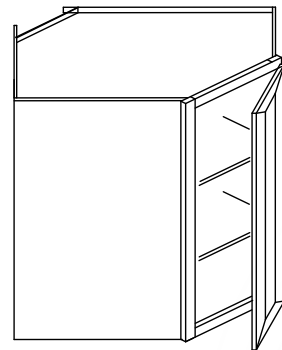


Model	Width	Height	Depth	Adj.Glass Shelf
WER2430	24	30	24	2
WER2436	24	36	24	2
WER2442	24	42	24	3

**Wall Easy Reach Cabinet**

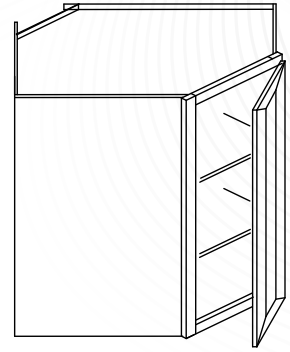
Model	Width	Height	Depth	Adj.Glass Shelf
DCW2430	24	30	24	2
DCW2436	24	36	24	2
DCW2442	24	42	24	3

**Wall Diagonal Corner Cabinet**

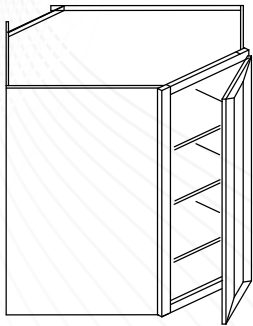


# Product Especification

Model	Width	Height	Depth	Adj. Shelf
DCW273615	27	36	24	2
DCW274215	27	42	24	3
15" Deep				



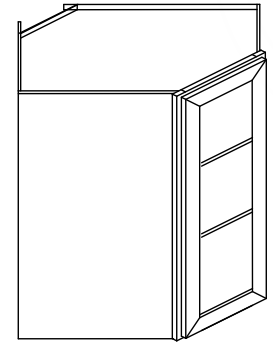
**Wall Diagonal Corner Cabinet**



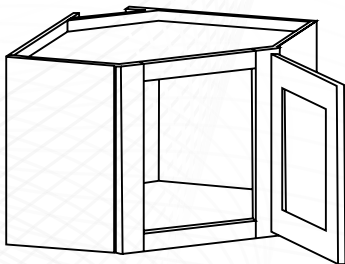
Model	Width	Height	Depth	Adj. Shelf
DCW2430GD	24	30	24	2
DCW2436GD	24	36	24	2
DCW2442GD	24	42	24	3
*Glass shelf coming soon*				

**Diagonal Corner Wall Glass Cabinet - Glass Door**

Model	Width	Height	Depth	Adj. Glass Shelf
DCW2736GD	27	36	24	2
DCW2742GD	27	42	24	3
15" Deep				
*Glass shelf coming soon*				



**Diagonal Corner Wall Cabinet - Glass Door**



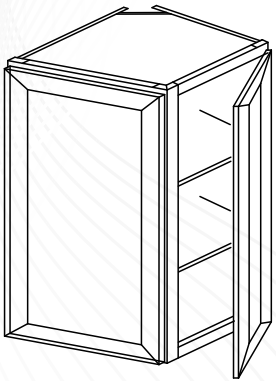
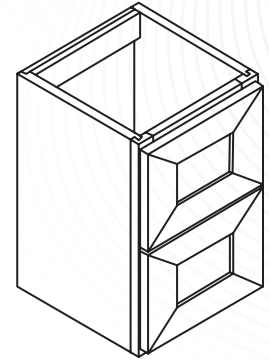
Model	Width	Height	Depth	Adj. Glass Shelf
DCW2412GD	24	12	24	No
DCW2712GD	27	12	24	15" Deep

**Diagonal Corner Wall Cabinet - Glass Door**

# Product Especification

Model	Width	Height	Depth	Adj. Shelf
W2D12	12	18	12	No
W2D18	18	18	12	No

*Wall Accessary Cabinet - 2 Drawer*

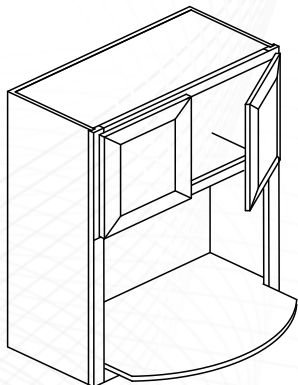
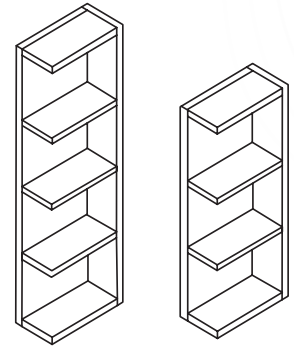


Model	Width	Height	Depth	Adj. Shelf
AW1230	12	30	12	2
AW1236	12	36	12	2
AW1242	12	42	12	3

*Angle Wall Cabinet*

Model	Width	Height	Depth	Shelf
OE630	6	30	12	2
OE636	6	36	12	2
OE642	6	42	12	3

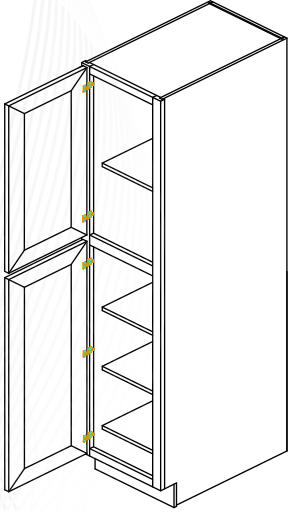
*Open End Shelf*



Model	Width	Height	Depth	Shelf
MO3030	30	30	12	0
MO3030	30	36	12	0
MO3030	30	42	12	0

*Microwave Wall Cabinet*

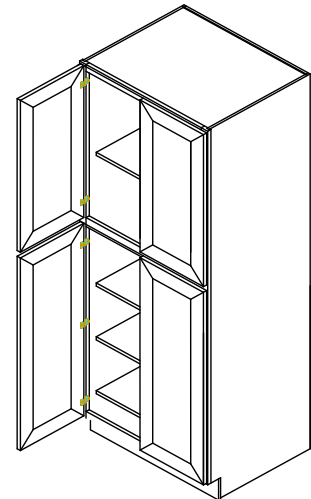
# Product Especification



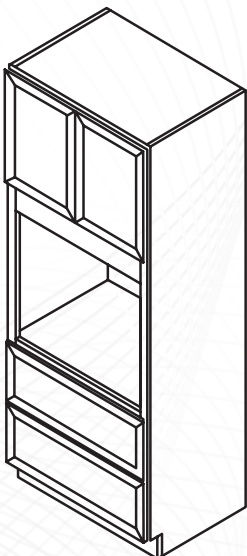
Model	Width	Height	Depth	Adj. Shelf
U188424	18	84	24	4
U189024	18	90	24	4
U189624	18	96	24	5

**Pantry**

Model	Width	Height	Depth	Adj. Shelf
U248424	24	84	24	4
U249024	24	90	24	4
U249624	24	96	24	5
U308424	30	84	24	4
U309024	30	90	24	4
U309624	30	96	24	5



**Pantry**

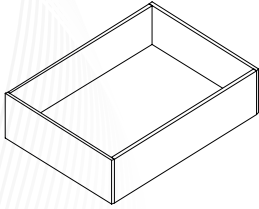


Model	Width	Depth	Drawer
O308424	30	24	2
O309024	30	24	2
O309624	30	24	2

Model	Width	Height	Depth	Drawer
O338424	33	84	24	2
O339024	33	90	24	2
O339624	33	96	24	2

**Double Oven Cabinet**

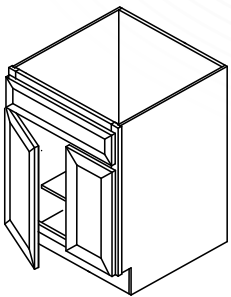
# Product Especification



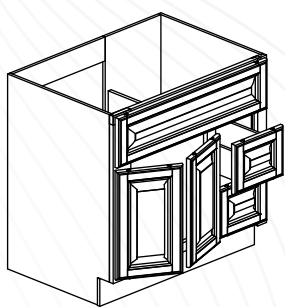
**Roll Out Tray**

Model	Model	
RS15	RS33	Standard is ball bearing sidemount glide. Can upgrade to undermount soft close glide.
RS18	RD33	
RS21	RS36	
RS24	RS27	

Model	Width	Height	Depth	Drawer
VS24	24	34 1/2	21	
VS27	27	34 1/2	21	
VS30	30	34 1/2	21	
VS36	36	34 1/2	21	2



**Vanity Sink Base**



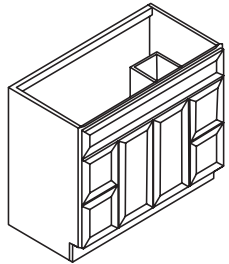
Model	Width	Height	Depth	Adj.Shelf
V3021DL/R	30	34 1/2	21	0
V3621DL/R	36	34 1/2	21	0

*L\* is drawer on left side*

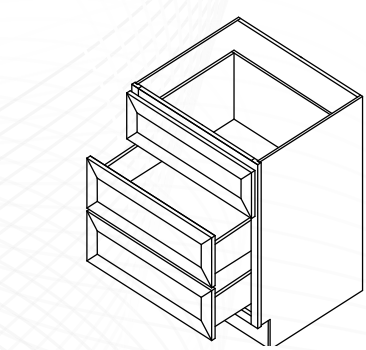
**Vanity Base Cabinet**

Model	Width	Height	Depth
VSD42-4	42	34 1/2	21
VSD48-4	48	34 1/2	21

ONE FALSE DRAWER



**Vanity Base Cabinet**



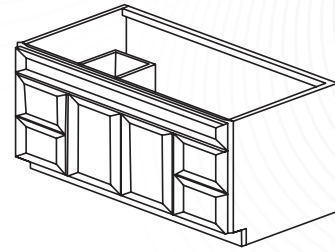
Model	Width	Height	Depth
3VDB12	12	34 1/2	21
3VDB15	15	34 1/2	21
3VDB18	18	34 1/2	21
3VDB21	21	34 1/2	21
3VDB24	24	34 1/2	21

**Vanity Drawer Base**

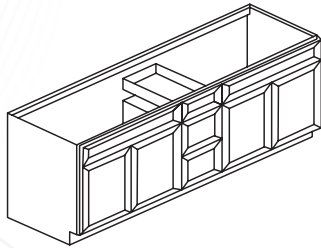


# Product Especification

Model	Width	Height	Depth
VSD60-4	60	34 1/2	21
ONE FALSE DRAWER			



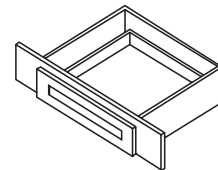
*Vanity Base Cabinet*



Model	Width	Height	Depth
VSD72	60	34 1/2	21
ONE FALSE DRAWER			

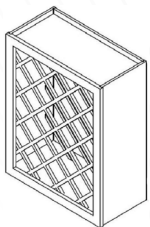
*Vanity Base Cabinet*

Model	Width	Height	Depth
VKD30	30	7	21
VKD36	36	7	21
VKD36 CAN TRIM TO VKD30			



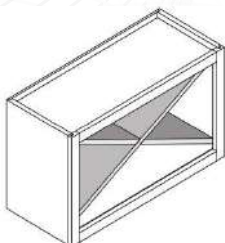
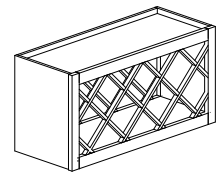
*Vanity Knee Drawer*

## -Wine Racks -



Model	Width	Height	Depth
WRC2430	24	30	12

Model	Width	Height	Depth
WRC3015	30	15	12
WRC3018	30	18	12

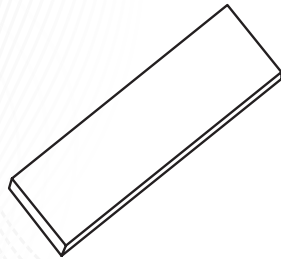
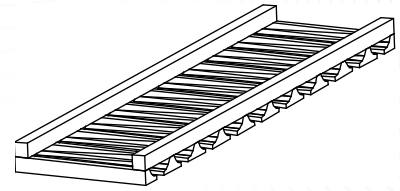


Model	Width	Height	Depth
WXC1218	12	18	12
WXC1818	18	18	12
WXC3018	30	18	12
WXC3015	30	15	12

# Product Especification

Model	Width	Height	Depth
SGH30	30	1 1/2	12

*Stem Glass Holder*



*Floating Shelf*

Model	Width	Height	Depth	Max Load
FLSH2410	24	2	10	30LB
FLSH3010	30	2	10	37LB
FLSH3610	36	2	10	45LB
FLSH4210	42	2	10	52LB
FLSH4810	48	2	10	60LB

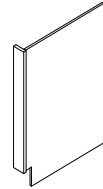
WALNUT FINISH, NOT TRIMMABLE



Model	Width	Height	Depth
F342	3	42	3/4
F642	6	42	3/4

Model	Width	Height	Depth
F396	3	96	3/4
F696	6	96	3/4
F6108	3	108	3/4

*Fillers*



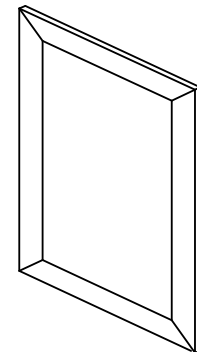
*Dishwasher Panel*

Model	DWR3
Width	3
Height	34 1/2
Depth	24

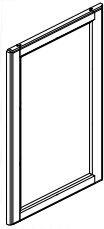
Includes 3" filler

Model	Width	Height	Depth
WDEP12	11 1/2	11	3/4
WDEP30	11 1/2	29	3/4
WDEP36	11 1/2	35	3/4
WDEP42	11 1/2	41	3/4

*Decorative End Panel*

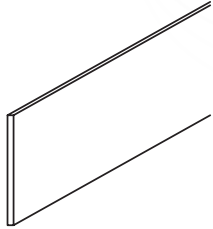


# Product Especification




<b>Model</b>	BDEP
<b>Width</b>	23 1/2
<b>Height</b>	29
<b>Depth</b>	3/4

**Decorative End Panel**



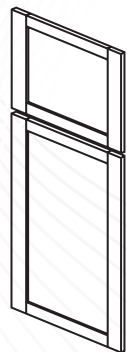
<b>Model</b>	TKC
<b>Width</b>	4 1/2
<b>Height</b>	96
<b>Depth</b>	1/4

**Toe Kick**



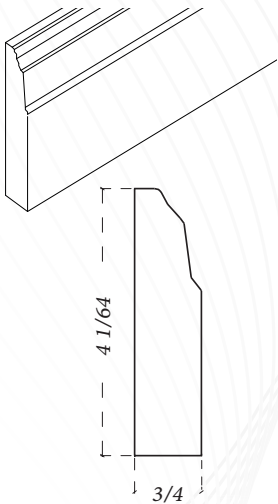
<b>Model</b>	S2496
<b>Width</b>	24
<b>Height</b>	96
<b>Depth</b>	3/4

**Shelf Board**



Model	Width	Height	Depth
TDEP2484	23 1/2	78 1/2	3/4
TDEP2490	23 1/2	84 1/2	3/4
TDEP2496	23 1/2	90 1/2	3/4

**Tall Decorative End Panel**



4 1/64

3/4

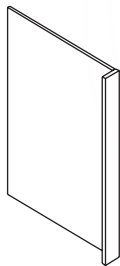
**Furniture Base Molding**

<b>Model</b>	FBM
<b>Width</b>	4 1/2
<b>Height</b>	96
<b>Depth</b>	3/4

Model	Width	Height	Depth
REPV2496	1 1/2	96	24
REPV2796	1 1/2	96	27

INCLUDES 1.5" FILLER

**Refrigerator Panel**

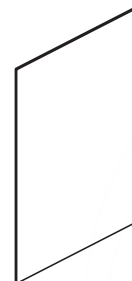



Model	Width	Height	Depth
FPV4296	42	96	1/4
USV2496	24	96	1/4

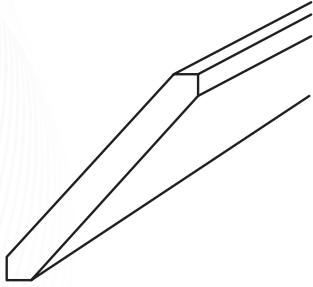
**Panel**

Model	Width	Height	Depth
WSV42	15	42	1/4
BSV	23 1/4	34 1/2	1/4

**Skin Panel**



# Product Especification

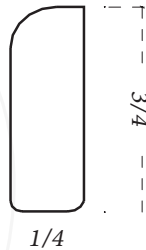
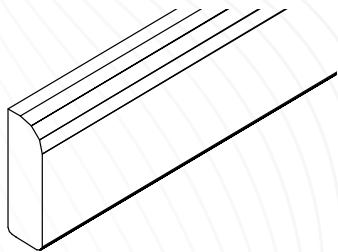
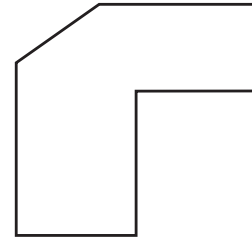


Model	Width	Height	Depth
ACM8	2 1/2	96	1/2

*Angle Crown Molding*

Model	Width	Height	Depth
ALRM8	3/4	96	3/4

*Angle Lightrail Molding*

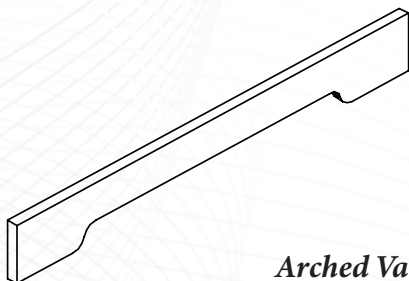
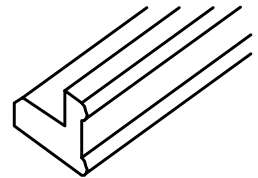
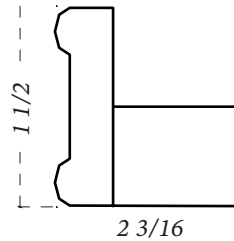


Model	Width	Height	Depth
SMB	3/4	96	1/4

*Scribe Molding*

Model	Width	Height	Depth
LM8	1 1/2	96	2 3/16

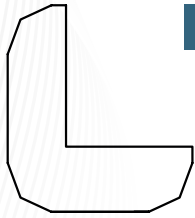
*Lightrail Molding*



*Arched Valance*

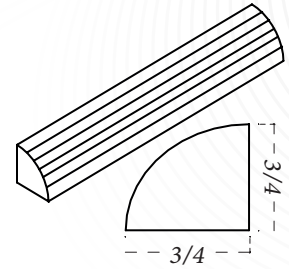
Model	Width	Height	Depth
VA36	36	4 1/2	3/4
VA48	48	4 1/2	3/4
VA36 CAN TRIM TO VA30			
VA48 CAN TRIM TO VA42			

# Product Especification



Model	Width	Height	Depth
OCM8	3/4	96	3/4

*Outside Corner Molding*

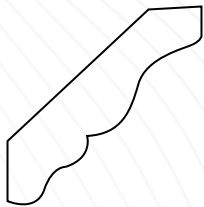
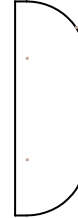


*Quarter Round/Shoe*

Model	QRM8/SHM
Width	3/4
Height	96
Depth	3/4

Model	Width	Height	Depth
BAM	3/4	96	1/4

*Molding*

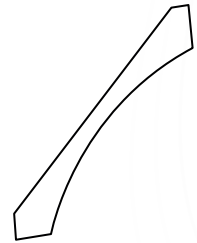


*Crown Molding*

Model	CM8
Width	2 3/4
Height	96
Depth	5/8

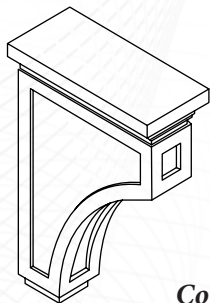
Model	Width	Height	Depth
CCM8	3 5/8	96	3 1/2

*Classic Cove Molding*



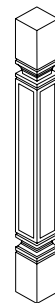
Model	Width	Height	Depth
DCM8/BCM8	4 3/8	96	11/16

*Decorative Crown Molding*



*Corbel*

Model	MCB
Width	3 1/2
Height	12
Depth	9



*Square Decorative Leg*

Model	SQDL
Width	3
Height	34 1/2
Depth	3

The background features a complex pattern of thin, overlapping wavy lines in shades of grey and blue. Two prominent L-shaped geometric outlines are present: a blue one on the left side and a brown one on the right side. The text is centered in the middle of the page.

**SIGNATURE  
BUILT CABINETS**